



Câmara Municipal de Sorriso

ESTADO DE MATO GROSSO



REQUERIMENTO Nº 135/2009

POLESELLO – PDT e BANCADA DOS PARTIDOS:

PDT, PTB, PR e PSB, vereadores com assento nesta Casa, em conformidade com Artigo 118 e Artigo 21 do Regimento Interno, no cumprimento do dever, REQUEREM à Mesa, ouvido o Soberano Plenário, que esse expediente seja encaminhado ao Senhor Ronaldo Sardenberg, Presidente da Anatel, com cópias ao Senhor Ricardo Knoepfelmacher, Presidente da Brasil Telecom, ao Senhor Sérgio Antunes Lemos, Diretor da Brasil Telecom em Mato Grosso e ao Senhor José Sampaio de Medeiros, Gerente Regional da Brasil Telecom, requerendo a instalação de um Telefone Público (Orelhão) em frente ao Bar do Scherer, na esquina da Avenida dos Imigrantes com a Rua Lupicínio Rodrigues, no Bairro Bela Vista, município de Sorriso - MT.

JUSTIFICATIVAS

Considerando que o bairro comporta um grande número de pessoas e que os orelhões nele instalados não atendem a demanda;

Considerando que, com o atendimento do presente requerimento, as pessoas poderão utilizar-se do telefone público (orelhão), como ferramenta importantíssima de comunicação com todos os órgãos públicos, instituições, empresas comerciais, cidades, estados e outros, beneficiando todos que por ali passam;

Considerando que o uso da telefonia, hoje é uma ferramenta essencial em nosso dia-a-dia e está completamente integrado ao cotidiano das pessoas;

Considerando que nas imediações do endereço citado estão instalados pequenos comércios;

Considerando que é uma reivindicação dos moradores do bairro.

Câmara Municipal de Sorriso, Estado de Mato Grosso, em 14 de maio de 2009.

POLESELLO
Vereador PTB

LEOCIR FACCIO
Vereador PDT

PROFª. MARISA
Vereador PSB

LUIS FABIO MARCHIORO
Vereador PDT

CHAGAS ABRANTES
Vereador PR

GERSON L. FRANCIO - JABURU
Vereador PSB

ROSEANE MARQUES DE AMORIM
Vereador PR



Câmara Municipal de Sorriso

ESTADO DE MATO GROSSO

REQUERIMENTO Nº 136/2009

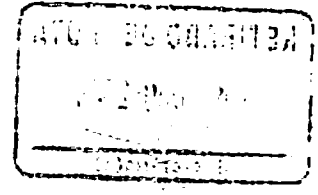


VEREADORES ABAIXO ASSINADOS, com fulcro no Inciso IV do Artigo 161 do Regimento Interno, no cumprimento do dever e considerando que se faz necessário a tramitação em Regime de Urgência do PROJETO DE LEI COMPLEMENTAR Nº 011/2009 DO LEGISLATIVO E DO PROJETO DE RESOLUÇÃO Nº 003/2009, **REQUEREM** à Mesa, ouvido o Soberano Plenário, a dispensa das exigências regimentais para deliberação em única votação, os referidos Projetos.

Câmara Municipal de Sorriso, Estado do Mato Grosso, em
18 de maio de 2009.

Control of Invertebrate Pests
Department of Agriculture

1954
No. 1000



The following information is being furnished to you for your information and guidance. It is based on the results of a survey conducted by the Department of Agriculture in 1954. The survey was conducted in order to determine the extent of the problem of invertebrate pests in the State of California. The results of the survey are as follows:

1. The most common invertebrate pest in California is the California Red Scale. It is found on a wide variety of plants, including citrus, grapes, and figs. It is a very destructive pest, and its control is a major problem for growers.

2. The second most common invertebrate pest is the Citrus Red Scale. It is found on citrus plants and is also a very destructive pest. Its control is also a major problem for growers.

3. The third most common invertebrate pest is the Olive Scale. It is found on olive plants and is also a very destructive pest. Its control is also a major problem for growers.

4. The fourth most common invertebrate pest is the Citrus White Scale. It is found on citrus plants and is also a very destructive pest. Its control is also a major problem for growers.

5. The fifth most common invertebrate pest is the Citrus Black Scale. It is found on citrus plants and is also a very destructive pest. Its control is also a major problem for growers.

The following information is being furnished to you for your information and guidance. It is based on the results of a survey conducted by the Department of Agriculture in 1954. The survey was conducted in order to determine the extent of the problem of invertebrate pests in the State of California. The results of the survey are as follows:

1. The most common invertebrate pest in California is the California Red Scale. It is found on a wide variety of plants, including citrus, grapes, and figs. It is a very destructive pest, and its control is a major problem for growers.

2. The second most common invertebrate pest is the Citrus Red Scale. It is found on citrus plants and is also a very destructive pest. Its control is also a major problem for growers.

3. The third most common invertebrate pest is the Olive Scale. It is found on olive plants and is also a very destructive pest. Its control is also a major problem for growers.

4. The fourth most common invertebrate pest is the Citrus White Scale. It is found on citrus plants and is also a very destructive pest. Its control is also a major problem for growers.

5. The fifth most common invertebrate pest is the Citrus Black Scale. It is found on citrus plants and is also a very destructive pest. Its control is also a major problem for growers.